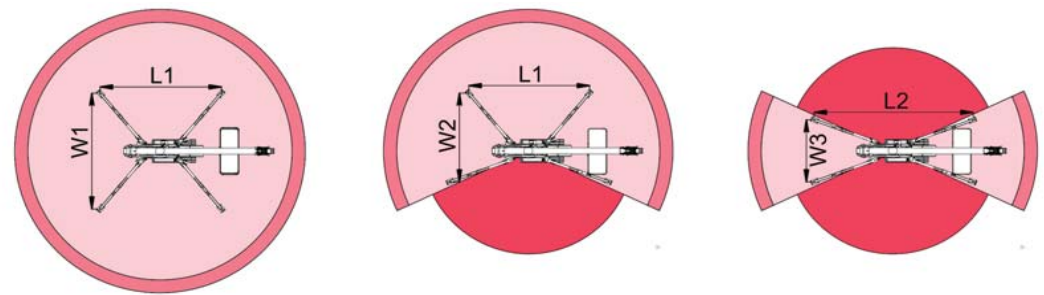
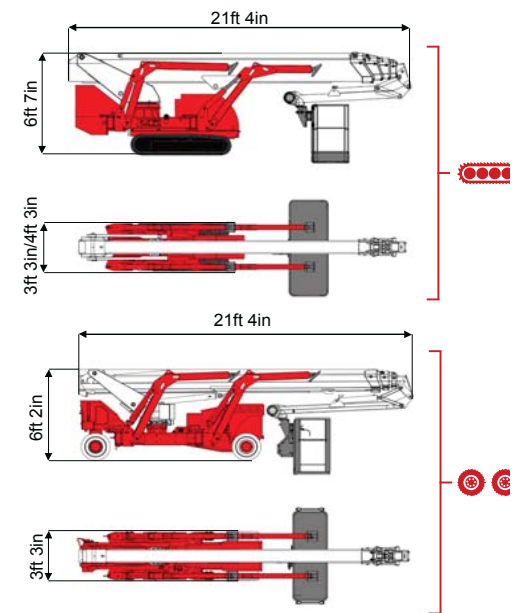
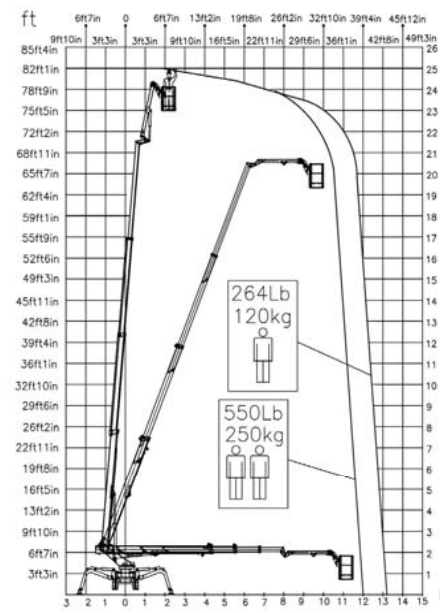




82ft ↑
42ft 8in →
550 lb 👤 👤



39ft 4in	43ft 4in	22ft 12in	L1	L2	W1	W2	W3
550 lb	264 lb	264/550 lb	16ft 4in	21ft 6in	15ft 11in	12ft 3in	8ft 7in

BI-ENERGY Diesel+AC																				
TSJ 82/C		82 ft	42ft 8in	550 lb	175°	540°	8ft 6in/2ft 4in	90°+80°	8ft 6in-15ft 11in	30%	40%	0,87 mph	8708 lb	5732 lb	37,17 psf	67,02 psf	3ft 3in/4ft 3in	21ft 4in	6ft 7in	
TSJ 82/R		82 ft	42ft 8in	550 lb	175°	540°	8ft 6in/2ft 4in	90°+80°	8ft 6in-15ft 11in	30%	25%	0,81 mph	8708 lb	5732 lb	37,17 psf	67,02 psf	3ft 3in	21ft 4in	6ft 7in	

	Battery type	Battery charge	Add. Weight	Autonomy	Charging time	Electropump
ECO DC+AC		48V 320 A/h 5h	990 lb	6-7 h endless	7h	48V 12 kW
ECO DC+AC		48V 270 A/h 5h	880 lb	6-7 h endless	7h	48V 9 kW
HYBRID Diesel+DC		24V 240 A/h 5h	440 lb	2-3 h endless	7h	24VD 3 kW



COMPANY WITH QUALITY SYSTEM
 CERTIFIED BY DNV GL
 = ISO 9001 =

Characteristics and technical data are informative only and subjected to change without notice.