

SOSlocation.ca

VENTE · LOCATION · SERVICE · TRANSPORT

1-833-360-3330



Technical Data

Specification & Capacities

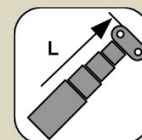


MPK20

S.N:



3,0kW/4,1Hp



1,7-4,2m



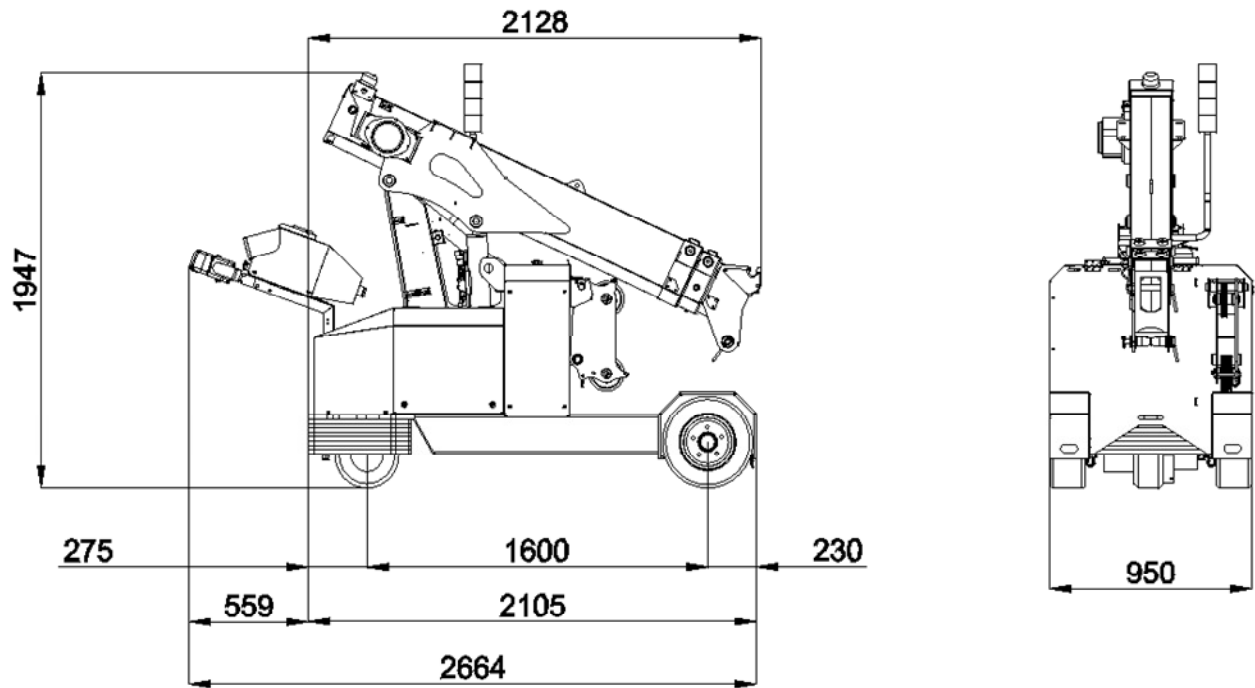
2000kg



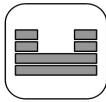


EN 13000

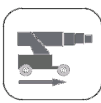

[m] [kg]



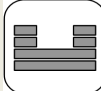



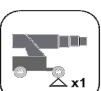
MPK20 – OVERALL DIMENSIONS

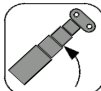
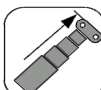


		kg
		1455
		500
Tot.		1955

	n° 1 24V 345 Ah	kW	3,0kW 4,2Hp
---	-----------------	-----------	-------------

	km/h	3,6
	10°	

							
	1455			500			
	m	0,2	0,5	1	1,5	2	2,5
	kg	0	2000	1000	800	600	400
	kg	1200	160	200	100	100	150
	kg	350	1870	1350	1300	1200	1075

	-25/50°		13s
	m	1,7-4,2	30s

HOIST PERFORMANCE

Layer	Max Line Pull	Normal Line Speed	High Line Speed
	kg	m/min	m/min
1	750*	14.7	N/A
2	700*	15.9	N/A
3	650*	16.8	N/A
4	600	18.0	N/A

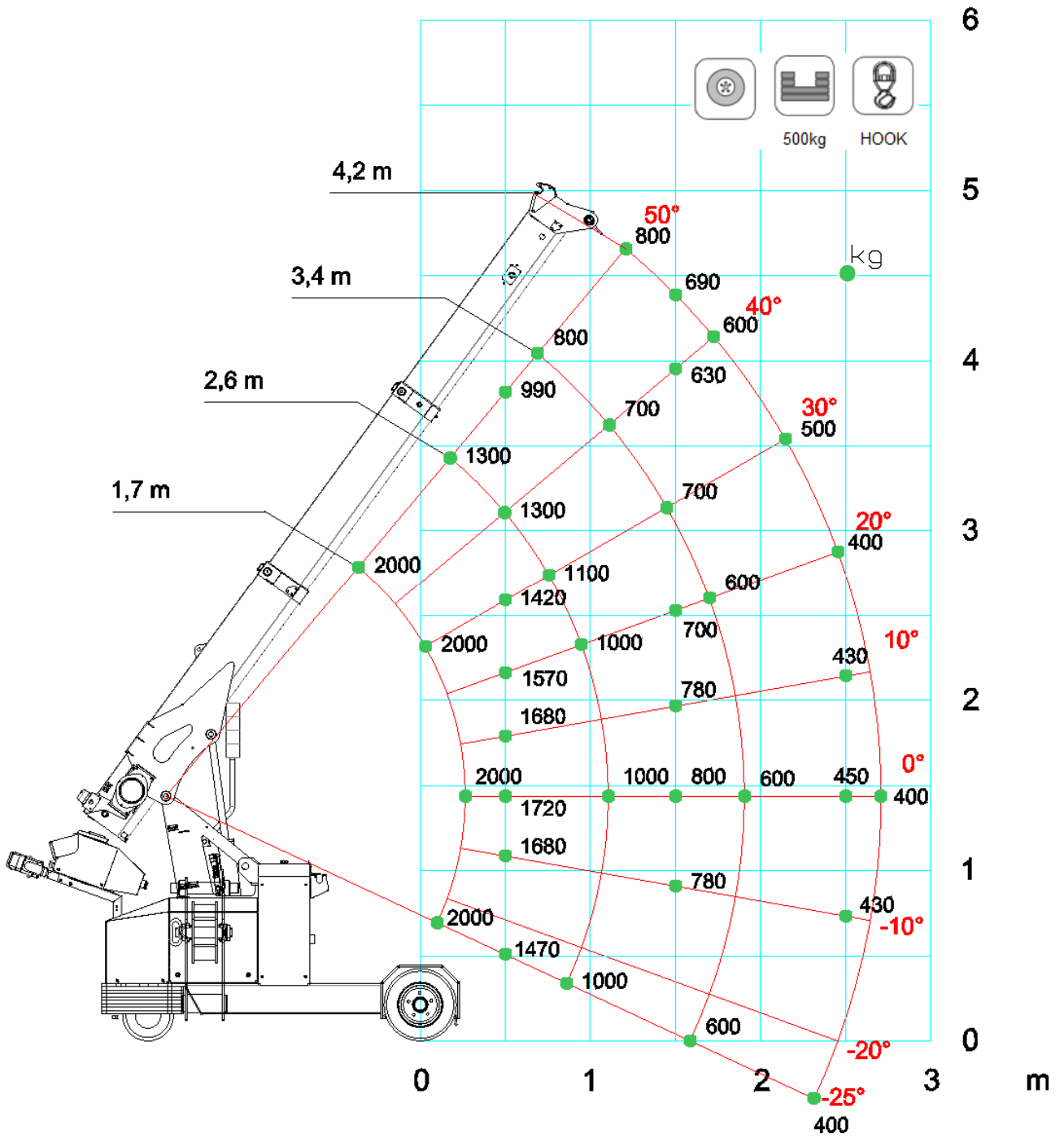
(*) 600kg LMI limited

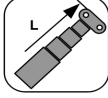
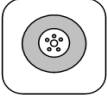
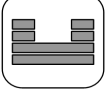


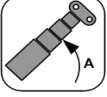
Wire Rope	Diameter	Tot. Length	Max Load
	mm	m	kg
A4L 19x7 right lang lay	7	60	3530

HOOK BLOCK

LOAD	No. of	
	Sheaves	Lines
1800	1	3
1200	1	2
600		1

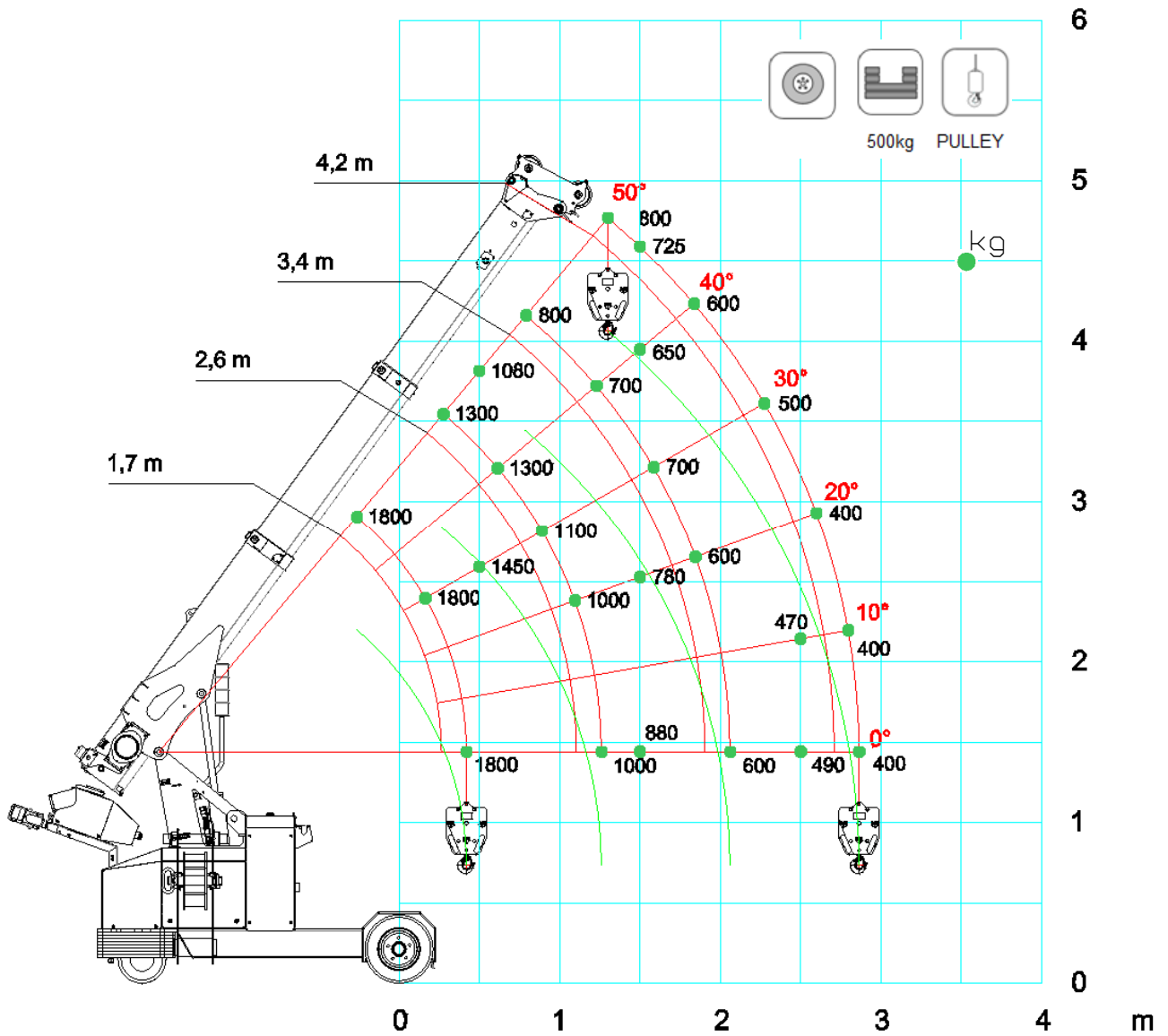
MPK20 - HOOK



[m] [kg]							
	500kg			HOOK			
	1,7	2,2	2,6	3,0	3,4	3,8	4,2
50°	2000	1800	1300	800	800	800	800
45°	2000	1800	1300	800	800	780	700
40°	2000	1700	1300	800	700	730	600
35°	2000	1700	1200	800	700	600	500
30°	2000	1700	1100	800	700	600	500
25°	2000	1700	1000	700	600	500	400
20°	2000	1700	1000	700	600	500	400
15°	2000	1700	1000	700	600	500	400
10°	2000	1700	1000	700	600	500	400
5°	2000	1700	1000	700	600	500	400
0°	2000	1700	1000	700	600	500	400
-5°	2000	1700	1000	700	600	500	400
-10°	2000	1700	1000	700	600	500	400
-15°	2000	1700	1000	700	600	500	400
-20°	2000	1700	1000	700	600	500	400
-25°	2000	1700	1000	700	600	500	400

MPK0020.04.02.000.2.06.15.A

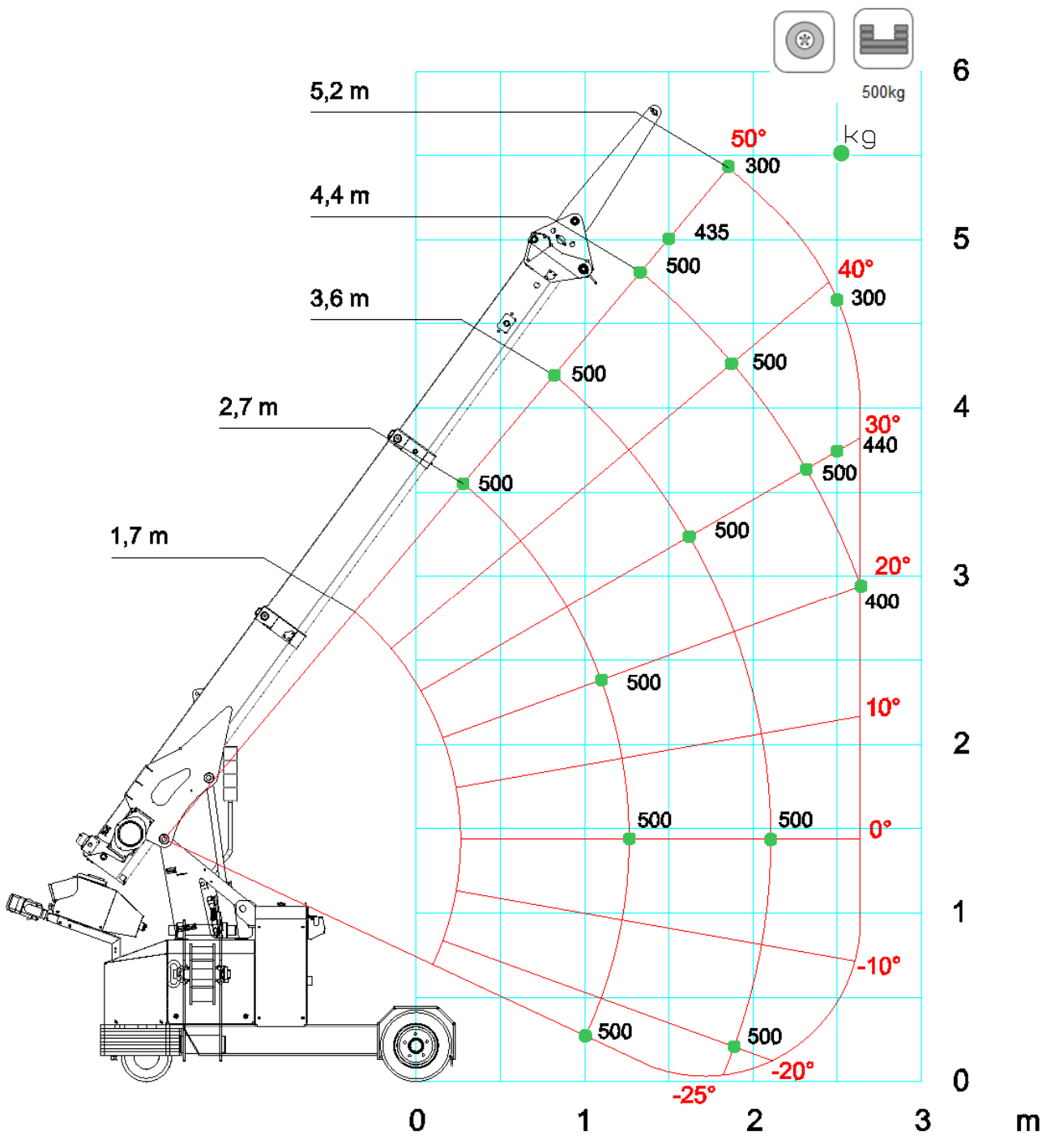
MPK20 + WINCH W600

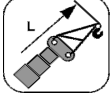
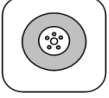
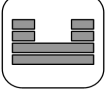

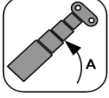


[m] [kg]					EN		
	500kg PULLEY						
	1,9	2,4	2,8	3,2	3,6	4,0	4,4
50°	1800	1800	1300	800	800	800	800
45°	1800	1800	1300	800	800	780	700
40°	1800	1700	1300	800	700	730	600
35°	1800	1700	1200	800	700	600	500
30°	1800	1700	1100	800	700	600	500
25°	1800	1700	1000	700	600	500	400
20°	1800	1700	1000	700	600	500	400
15°	1800	1700	1000	700	600	500	400
10°	1800	1700	1000	700	600	500	400
5°	1800	1700	1000	700	600	500	400
0°	1800	1700	1000	700	600	500	400

MPK0020.04.02.000.1.06.15.A

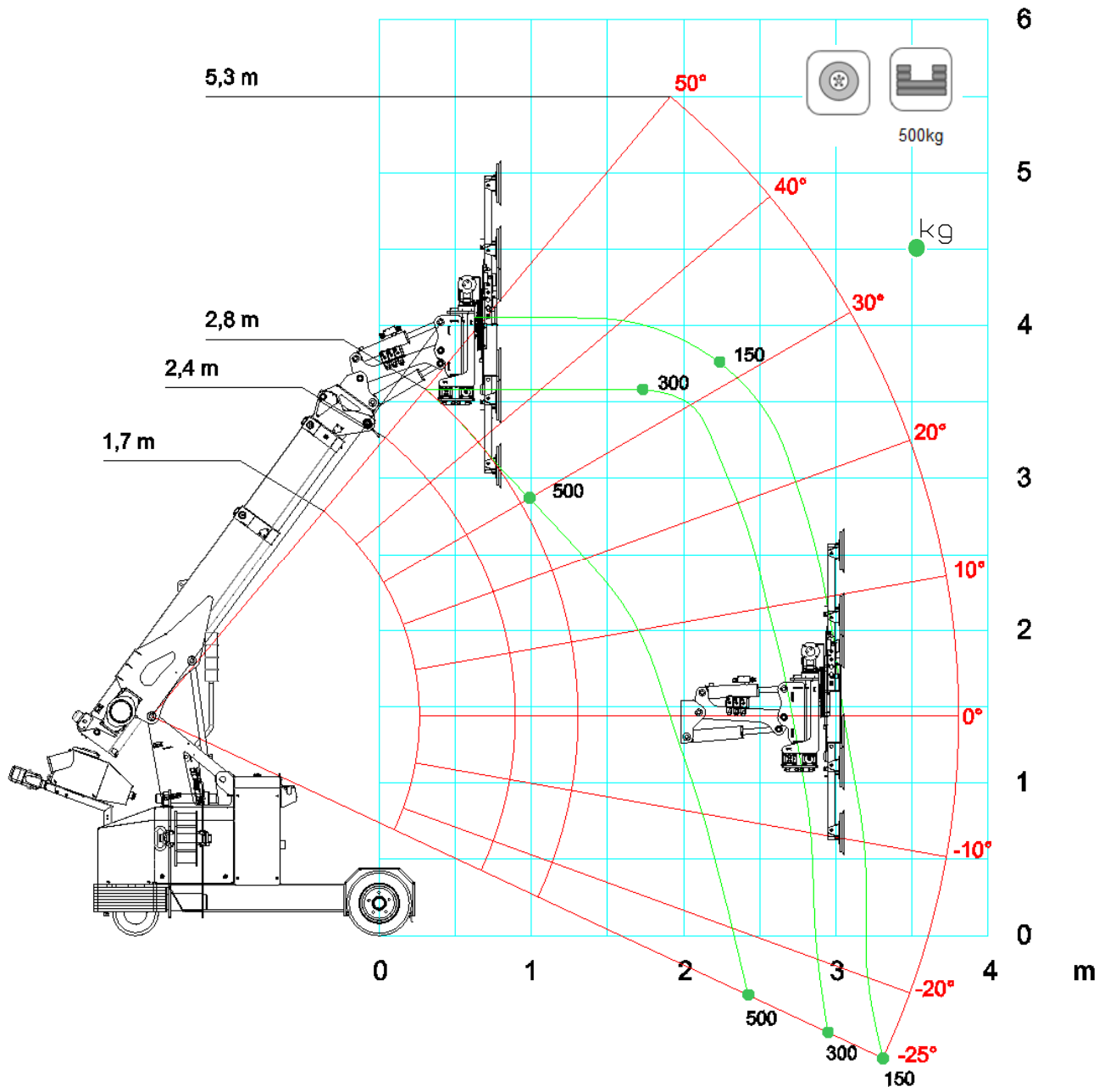
MPK20 + JIB500G

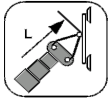
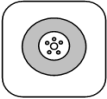
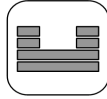

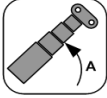


[m] [kg]							
	JIB500G	500kg					
	2,7	3,2	3,6	4,0	4,4	4,8	5,2
50°	500	500	500	500	500	500	300
45°	500	500	500	500	500	500	300
40°	500	500	500	500	500	400	
35°	500	500	500	500	500	400	
30°	500	500	500	500	500		
25°	500	500	500	500	400		
20°	500	500	500	500	400		
15°	500	500	500	500			
10°	500	500	500	500			
5°	500	500	500	500			
0°	500	500	500	500			
-5°	500	500	500	500			
-10°	500	500	500	500			
-15°	500	500	500	500			
-20°	500	500	500				
-25°	500						

MPK0020.04.02.300.2.06.15.A

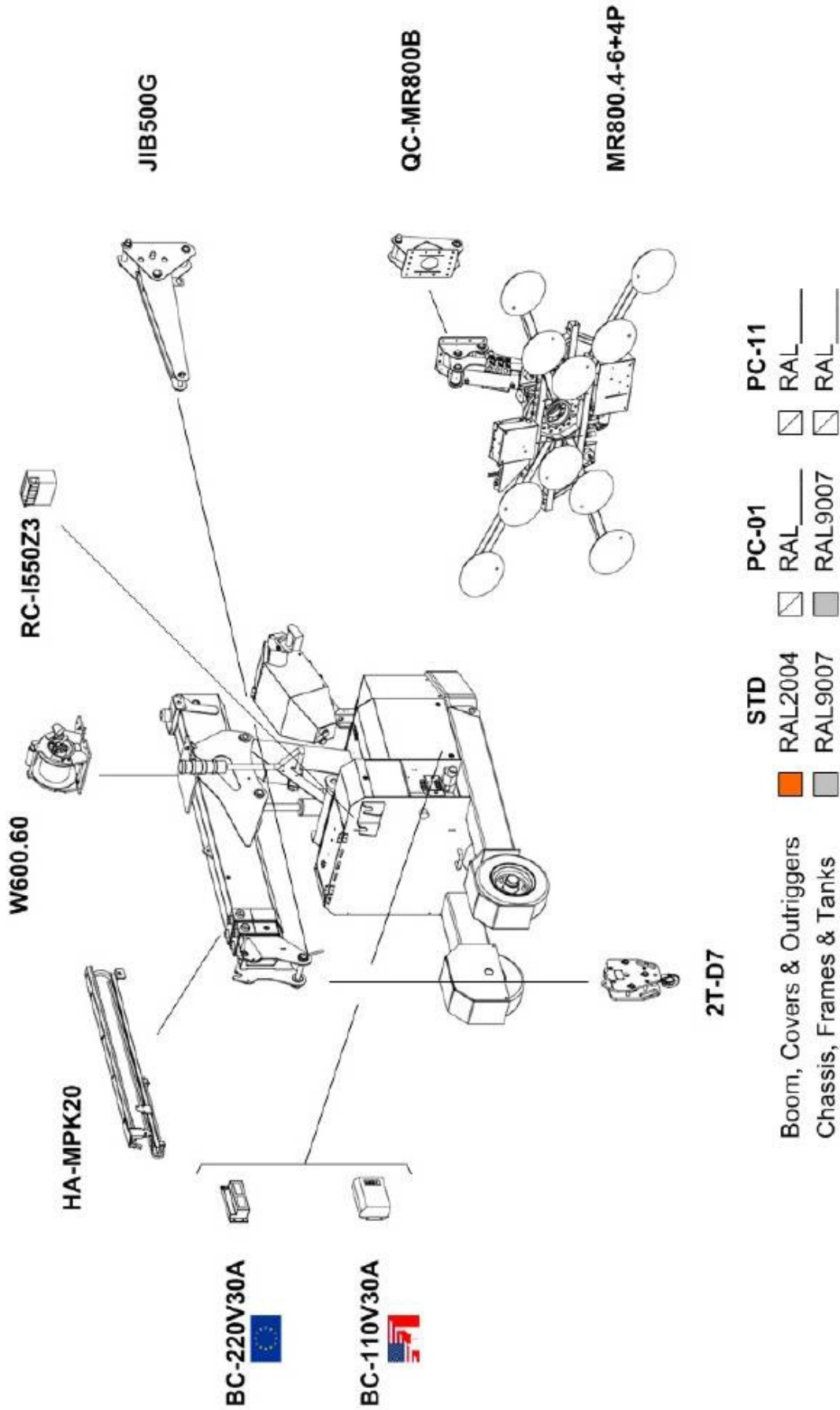
MPK20 + MR800



[m] [kg]							
	MR800	500kg					
	2,5	3,3	3,7	4,1	4,5	4,9	5,3
50°	300	150					
45°	500	150	150				
40°	500	300	150	150			
35°	500	300	300	150			
30°	500	300	300	300			
25°	500	300	300	300	150		
20°	500	300	300	300	150		
15°	500	300	300	300	150		
10°	500	500	300	300	150		
5°	500	500	300	300	150		
0°	500	500	300	300	150		
-5°	500	500	300	300	150		
-10°	500	500	500	300	300		
-15°	500	500	500	300	300	150	
-20°	500	500	500	500	300	150	
-25°	500	500	500	500	300	300	150

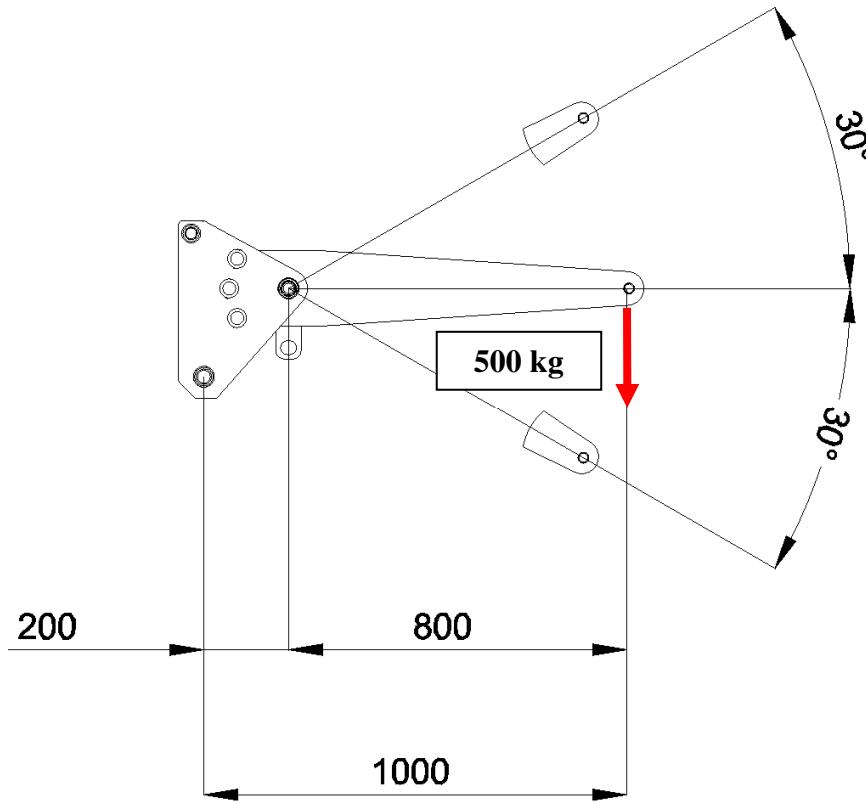
MPK0020.04.02.430.0.06.15.A


ACCESSORIES



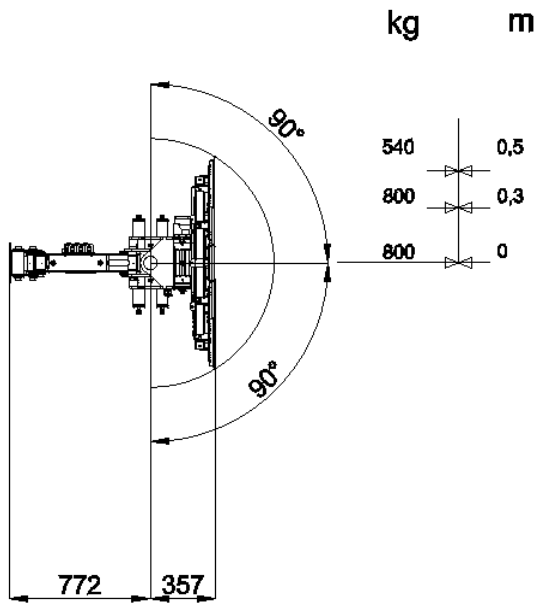
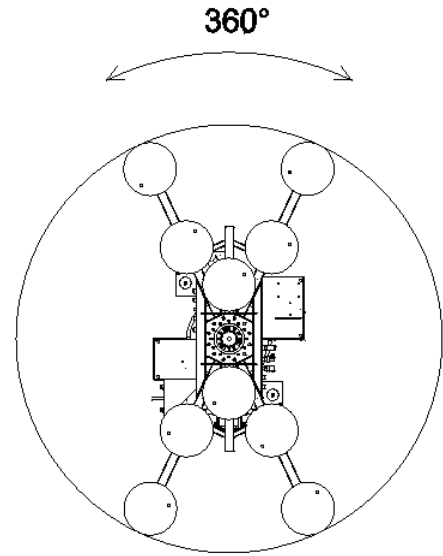
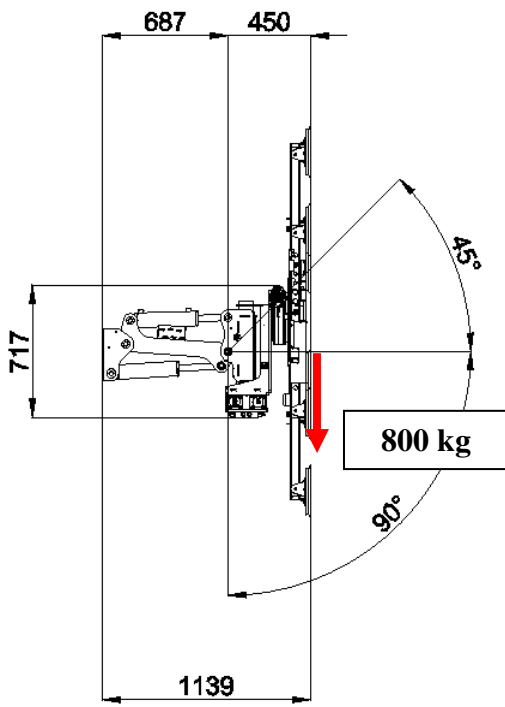
ACCESSORIES FEATURES

JIB500G



	kg
	26

MR800.4+6-4P



	6	10	n°
	540	800	kg
	270	400	kg

	kg
	295

SYMBOLS

	Weight		Chart Wheels		Engine		Jib length and angle
	Counterweight		Minipicker		Diesel Fuel		Jib Length
	Crane		Back Wheel Point Loading		Gasoline Fuel		Jib Radius
	Travel Speed		Front wheel Point Loading		Tank		Hydraulic Jib Length
	Gradeability		Travel Speed		Battery		Hydraulic Jib Radius
	Outrigger Load		Gradeability		Power		Mechanical Jib Length
	Track Loading		Working Radius		Boom Angle		Mechanical Jib Radius
	Outriggers Setup		Hookblock		Boom Length		Manipulator Length
	Ext Tracks Width		Slewing		Boom Radius		Manipulator Radius
	Chart On Tracks		Slewing Locked		Jib Hook Radius		Maximum inclination of the machinery
	Jib on board		Without jib on board		Standard		Stabilizing bar
	Horizontal boom angle		Number of vacuum pads		Factory max. load		Building site max. load

Remarks referring to load chart

- The load charts are calculated according to EN 13000.
- For the calculation of the load charts at least a wind speed of 9m/s (33km/h) and regarding the load a sail area of 1m² per ton load and a wind resistance coefficient of 1.2 on the load have been taken into account. For lifting of loads with large sail areas and/or high wind resistance coefficients the maximum wind speed as stated in the load charts has to be reduced.
- Lifting capacities are given in kilograms.
- The weight of the hook blocks and hooks is part of the load and therefore it must be deducted from the lifting capacities.
- Working radii are measured from the slewing centre.
- The lifting capacities given for the telescopic boom apply if the folding jib is removed.
- Subject to modification of lifting capacities.