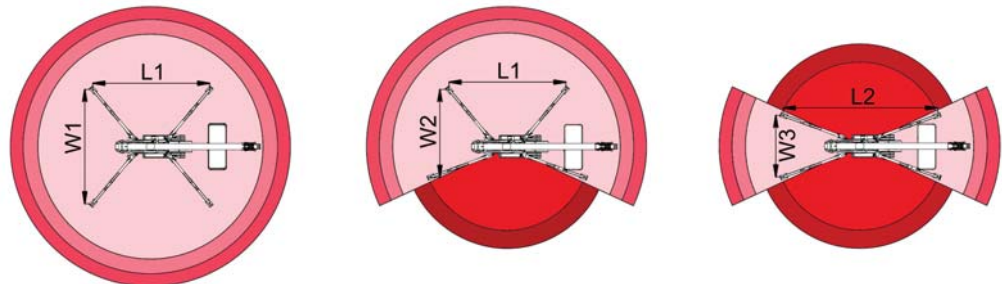
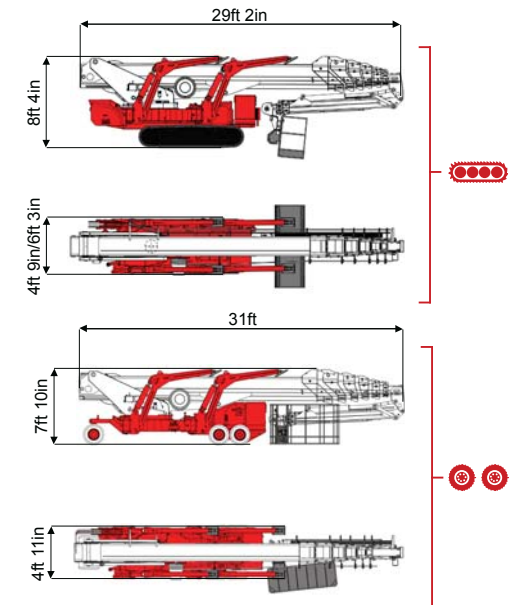
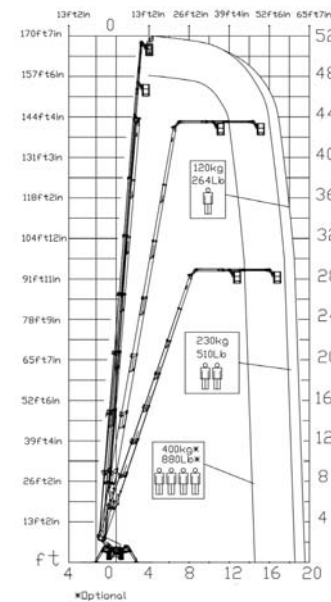




**170ft 7in** ↑  
**63ft 12in** →  
**880 lb** 👤👤👤



45ft 11in	59ft 1in	62ft 4in	39ft 4in	52ft 6in	L1	L2	W1	W2	W3
880 lb	510 lb	264 lb	880 lb	264/510 lb	20ft 6in	22ft 9in	16ft 5in	14ft 9in	13ft 1in

BI-ENERGY Diesel+AC																			
<b>XTJ 170/C</b>																			
	170ft 7in	63ft 12in	880 lb	170°	660°	7ft 10in/2ft 4in	90°+80°	13ft 1in-16ft 5in	15%	40%	0,93 mph	30864 lb	20943 lb	87,49 psf	136,76 psf	4ft 9in/6ft 3in	29ft 2in	8ft 4in	
<b>XTJ 170/R</b>																			
	170ft 7in	63ft 12in	880 lb	170°	660°	7ft 10in/2ft 4in	90°+80°	13ft 1in-16ft 5in	15%	25%	0,87 mph	28660 lb	20943 lb	81,43 psf	127,16 psf	4ft 11in	31ft	7ft 11in	

	Battery type	Battery charge	Add. Weight	Autonomy	Charging time	Electropump
<b>ECO</b>	<b>DC+AC</b>					
	48V 270 A/h 5h	230V-48V 45A	880 lb	6-7 h endless	7h	48V 9 kW



COMPANY WITH  
QUALITY SYSTEM  
CERTIFIED BY DNV GL  
= ISO 9001 =