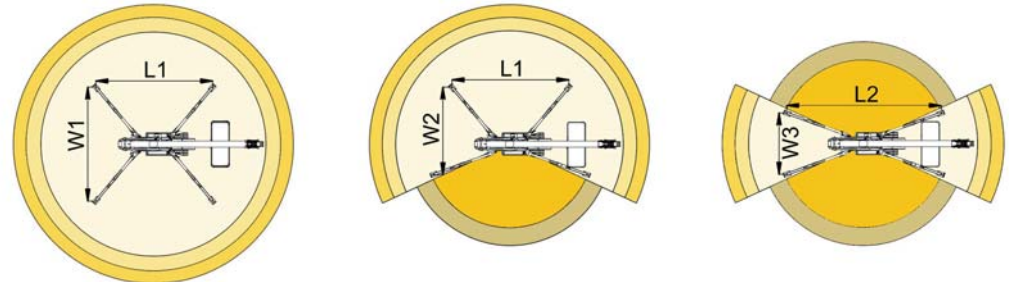
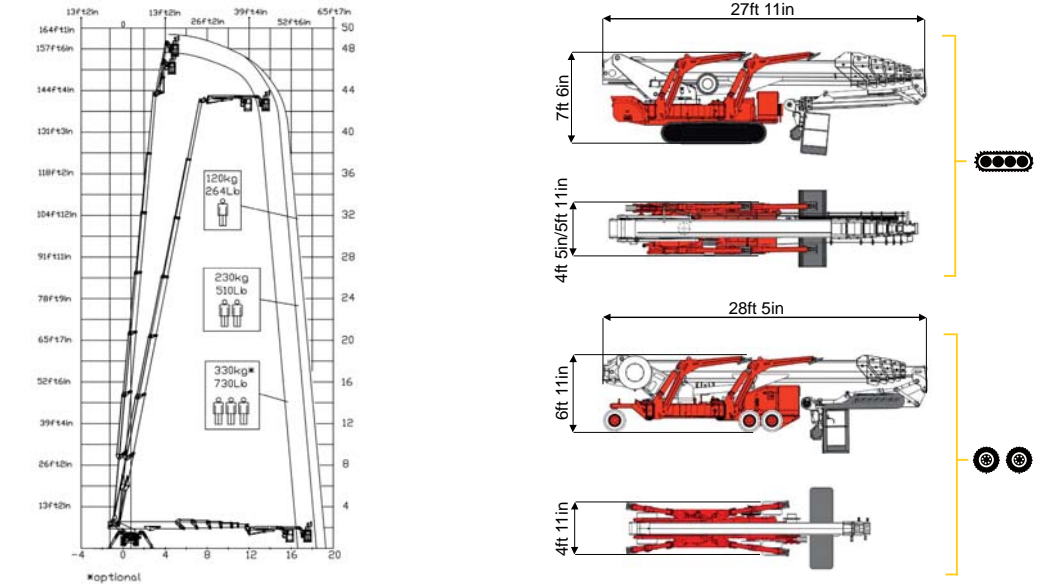




160ft 9in ↑  
63ft 4in →  
730 lb\* 👤👤



55ft 9in	60ft 9in	63ft 4in	45ft 3in	50ft 10in	L1	L2	W1	W2	W3
730 lb*	510 lb	264 lb	730 lb*	264/510 lb	21ft 2in	23ft 7in	16ft 12in	15ft 3in	13ft 7in

BI-ENERGY  
Diesel+AC



XTJ 157+/C	🔋	160ft 8in	63ft 4in	730 lb*	170°	660°	7ft 10inx2ft 4in	90°+80°	13ft 7in-7ft 6in	23%	38%	1,20 mph	24030 lb	16858 lb	68,09 psf	111,32 psf
XTJ 157+/R	🔋🔋	160ft 8in	63ft 4in	730 lb*	170°	660°	7ft 10inx2ft 4in	90°+80°	13ft 7in-7ft 6in	23%	16%	0,62 mph	24030 lb	16858 lb	68,09 psf	109,65 psf

Available version:

- BI-ENERGY (DIESEL+AC)
- ECO (DC+AC)
- HYBRID (DIESEL+DC)

Characteristics and technical data are informative only and subjected to change without notice.

**soslocation.ca**  
LOCATION • FORMATION  
**sosequipment.com**  
VENTE • PIÈCES • TRANSPORT