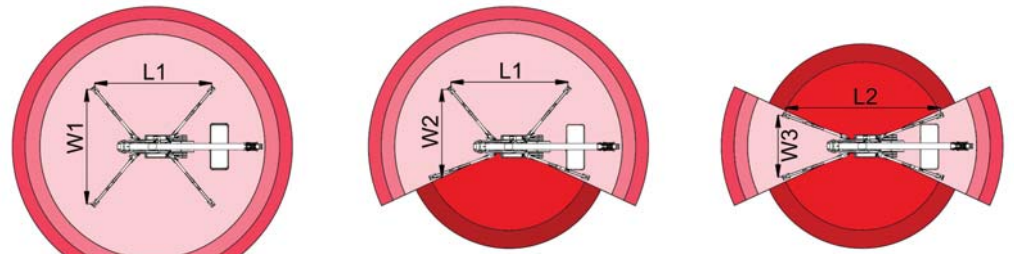
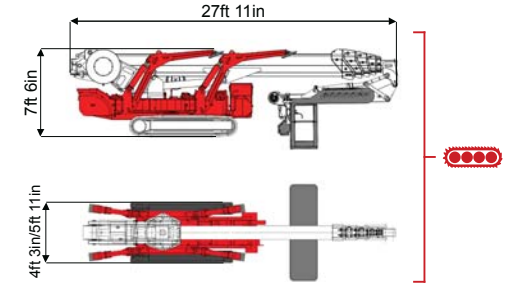
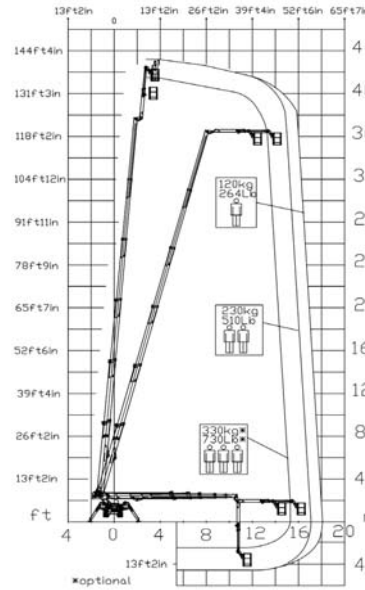




141ft 1in ↑
59ft →
730 lb 🧑🧑🧑



49ft 3in	55ft 9in	59ft 1in	37ft 9in	44ft 3in	L1	L2	W1	W2	W3
730 lb	510 lb	264 lb	730 lb	264/510 lb	18ft 10in	22ft 6in	17ft 6in	14ft 10in	12ft 1in



XTJ 140/C-R 🔋⚡ 141ft 1in 59ft 730 lb 175° 660° 7ft 10in/2ft 4in 90°+80° 12ft 1in-17ft 6in 25% 40% 1,40 mph 24030 lb 16534 lb 84,77 psf 111,32 psf 4ft 3in/5ft 11in 27ft 11in 7ft 6in

	🔋 Battery type	🔋⚡ Battery charge	+ lb Add. Weight	🕒 Autonomy	🕒🔋⚡ Charging time	🔧 Electropump
ECO	DC+AC 🔋⚡	48V 270 A/h 5h	880 lb	6-7 h endless	7h	48V 9 kW



COMPANY WITH
QUALITY SYSTEM
RTIFIED BY DNV GL
= ISO 9001 =